





3/17

STAND 02/2000
PLANUNG ZENTRUM

-  GEBAEUDE BESTAND
-  GEBAEUDE PROJEKT
-  GP 18/1 + 18/3
-  BESTOCKTER BEREICH

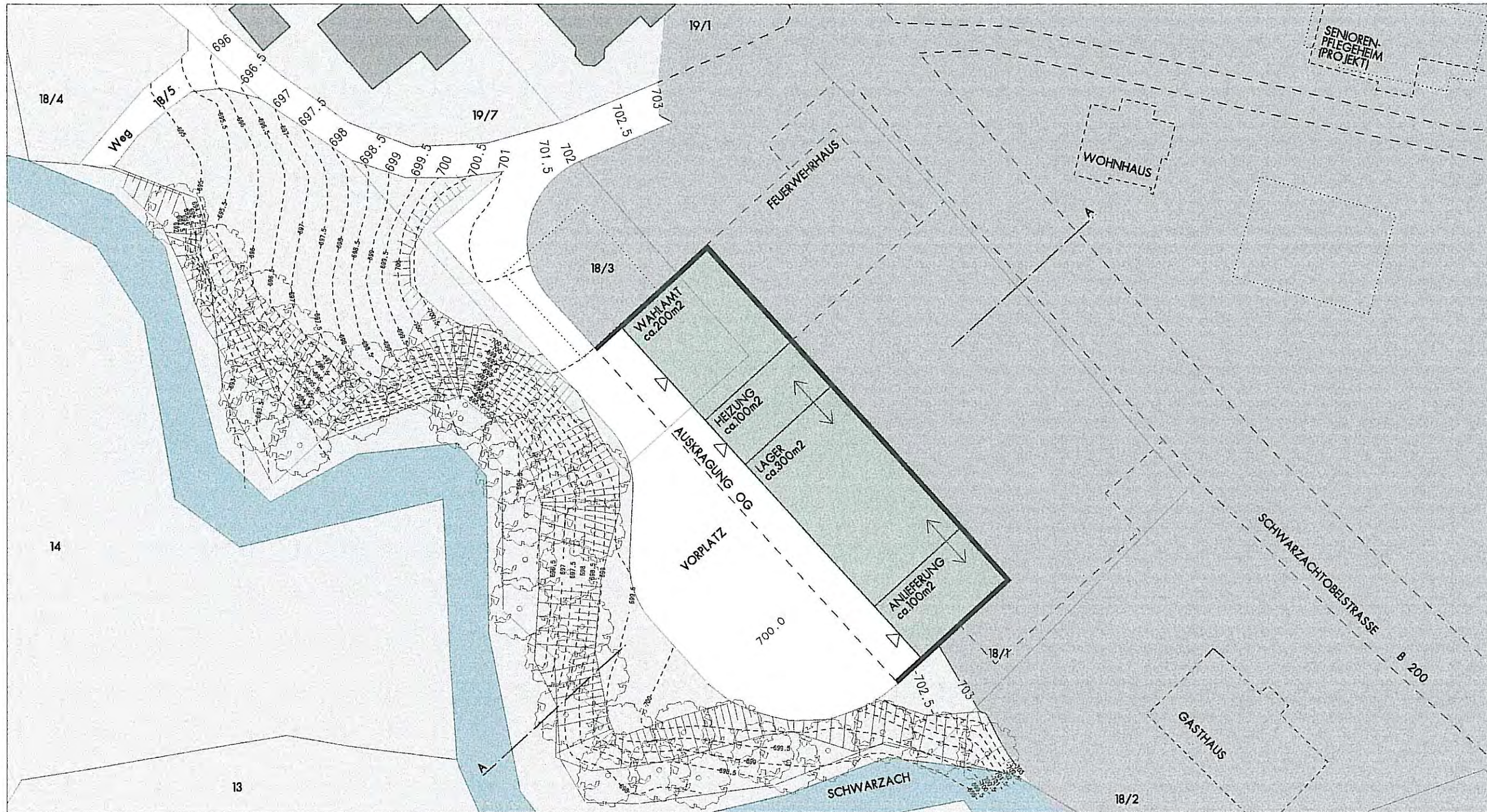


ARGE ARCHITEKTEN
HOERBURGER
KUESS
SCHWEITZER
BREGENZ 06/2001

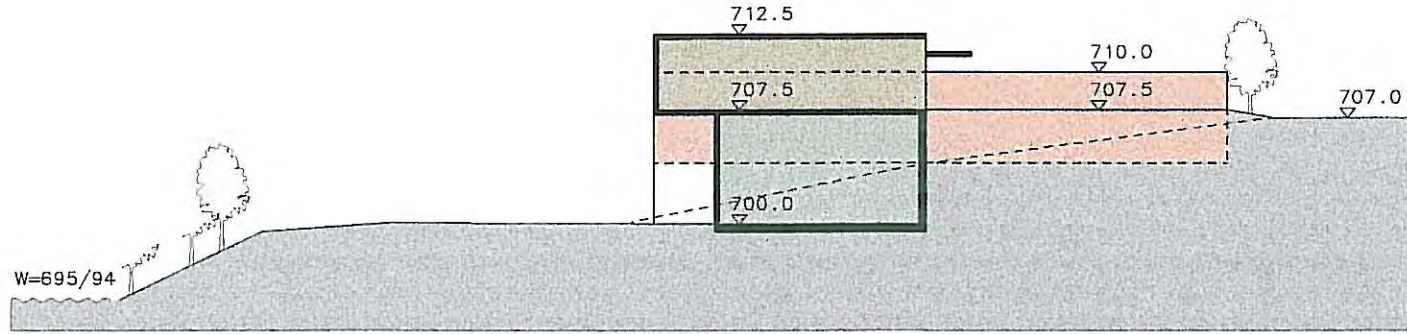


BIOMASSEHEIZWERK
LEBENSMITTELMARKT
FEUERWEHRHAUS

UNTERGESCHOSS

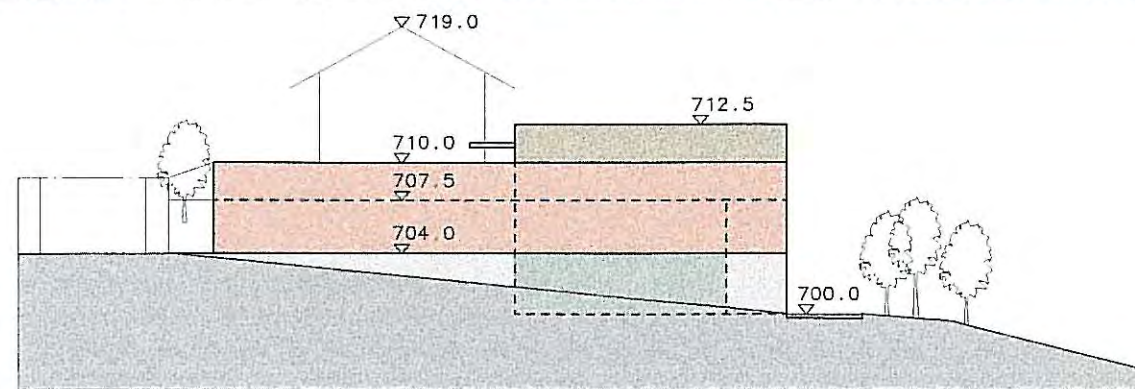


-  GEBÄUDE BESTAND
-  LEBENSMITTELMARKT
od. GEMEINDE-BAUHOFF
-  BIOMASSEHEIZWERK
WAKLAMT
-  FEUERWEHR
-  BESTOCKTER BEREICH



SCHNITT A-A

ANSICHT NORD-WEST



ARGE ARCHITECTEN






HOERBURGER
KUESS
SCHWEITZER

BREGENZ 06/2001

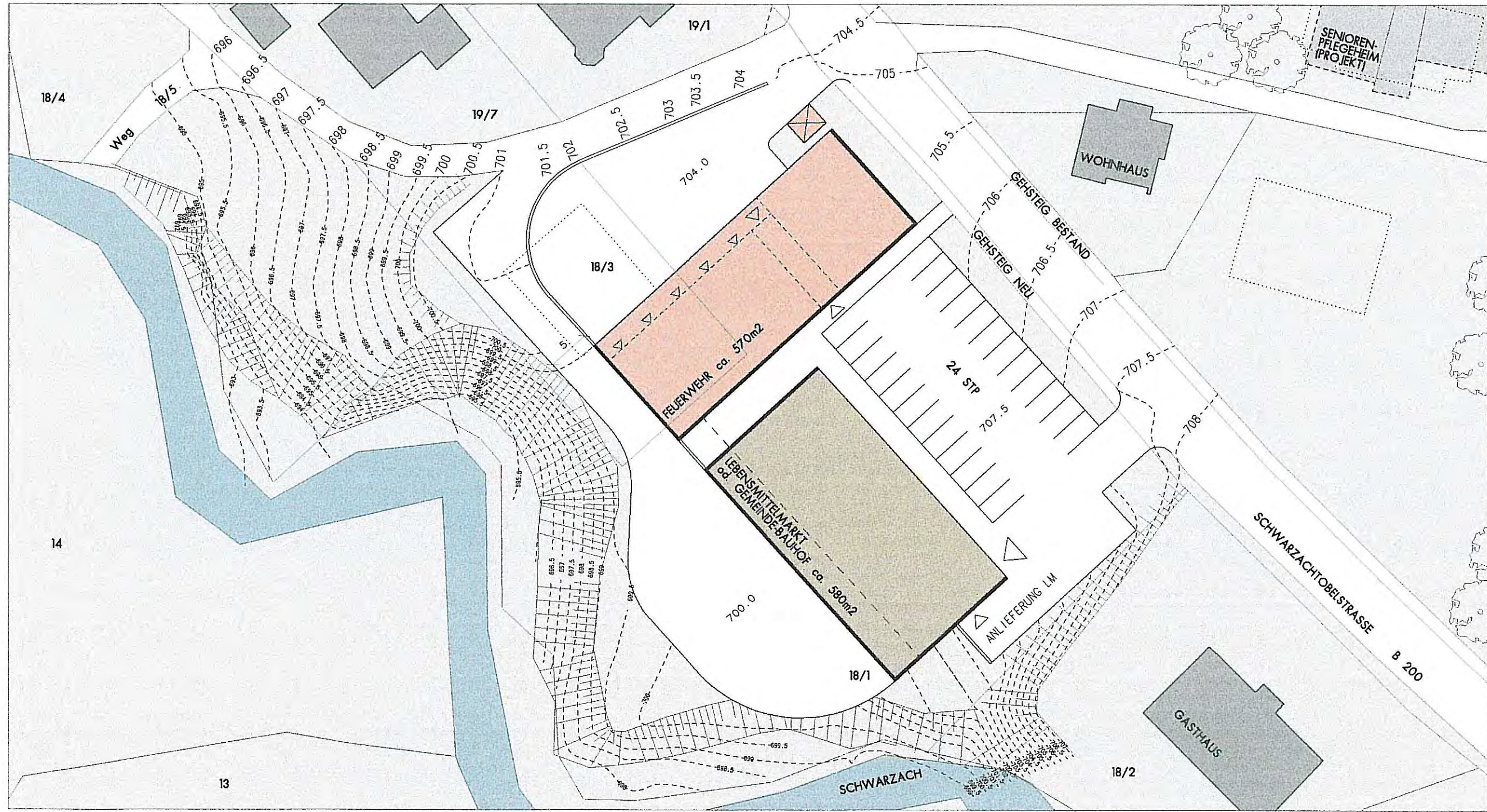


BIOMASSEHEIZWERK
LEBENSMITTELMARKT
FEUERWEHRHAUS

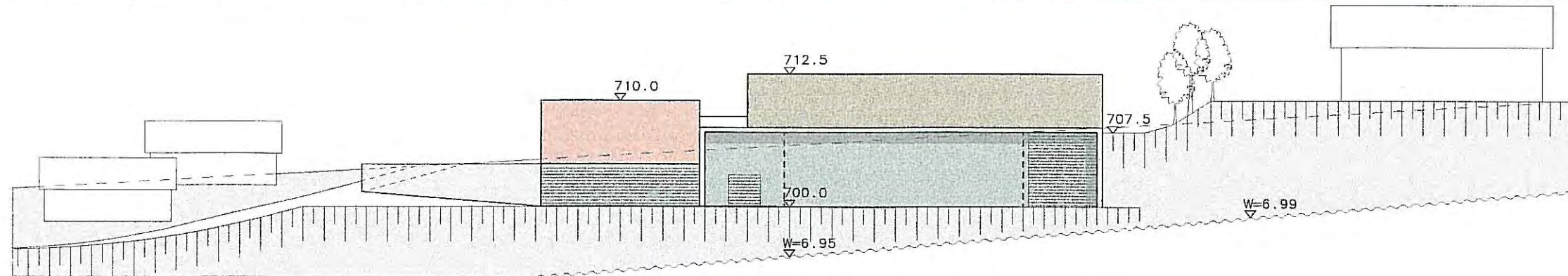
OBERGESCHOSS

-  GEBAEUDE BESTAND
-  GEBAEUDE PROJEKT
-  LEBENSMITTELMARKT
od. GEMEINDE-BAUHOEF
-  BIOMASSEHEIZWERK
WAHLAMT
-  FEUERWEHR

ANSICHT NORD-OST



ANSICHT UNTEN



ARGE ARCHITECTEN
HOERBURGER
KUESS
SCHWEITZER
BREGENZ 06/2001

