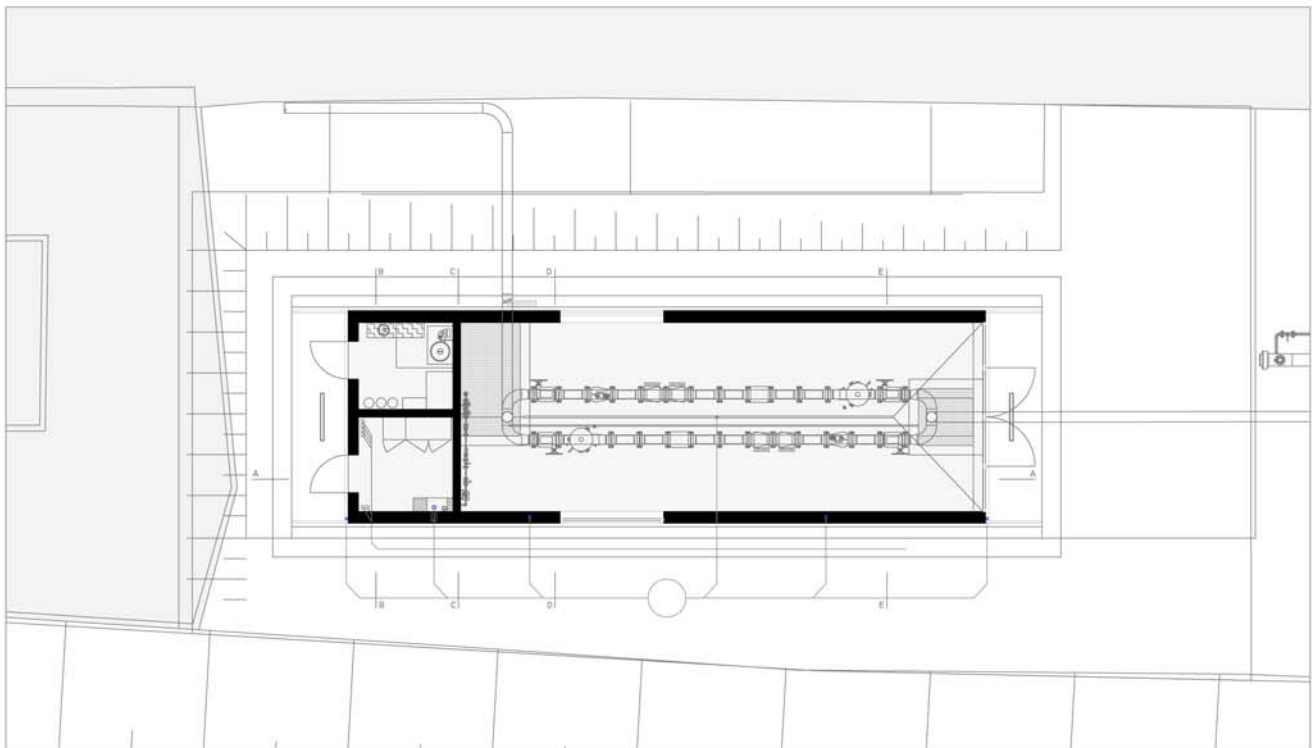


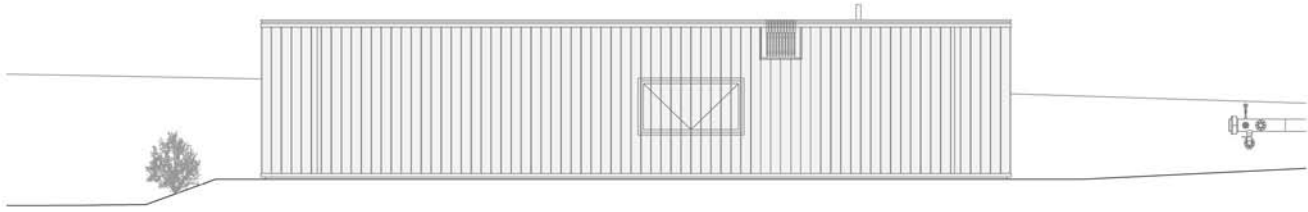
LAGEPLAN

0 5 10 15 m

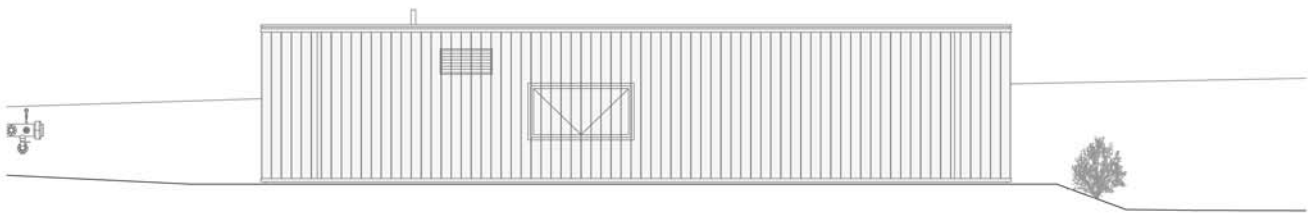


GRUNDRIß EG

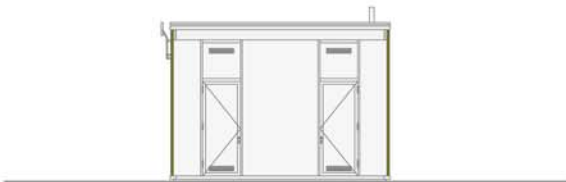
0 2 4 6 m



ANSICHT NORD-OST



ANSICHT SÜD-WEST

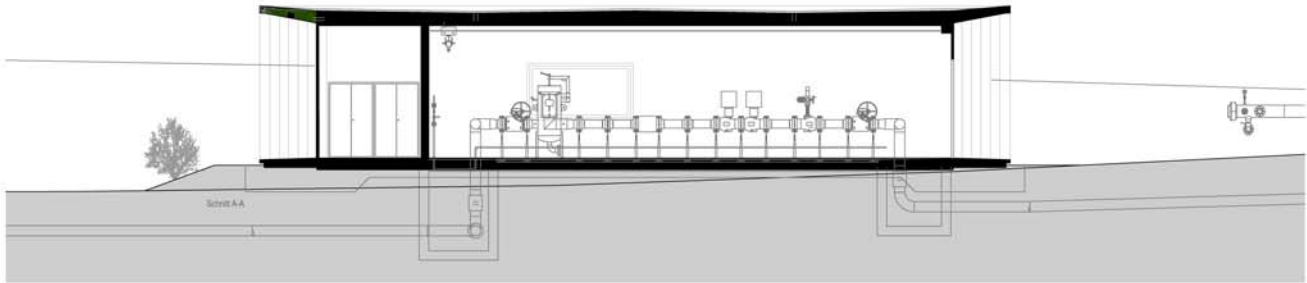


ANSICHT NORD-WEST

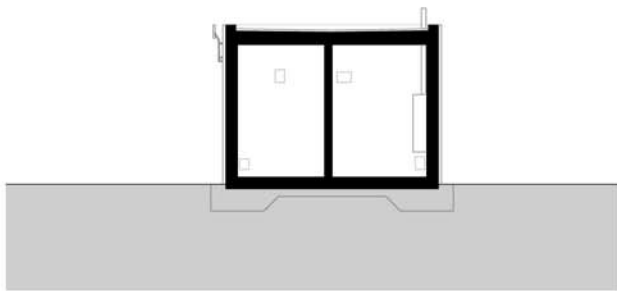


ANSICHT SÜD-OST

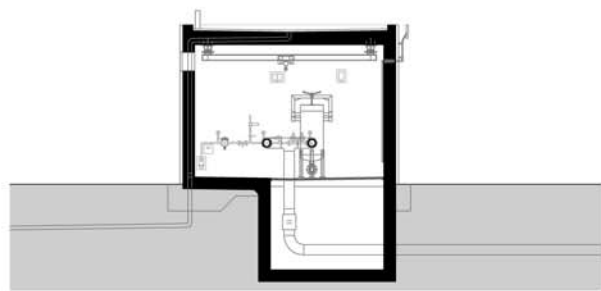
0 2 4 6 m



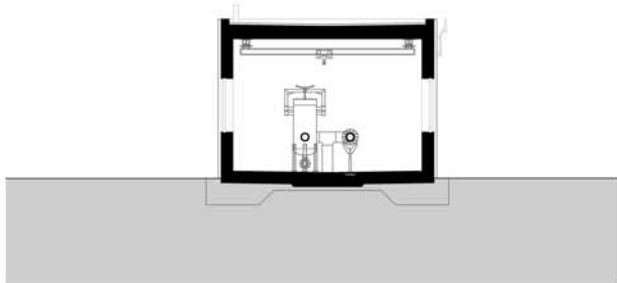
SCHNITT A-A



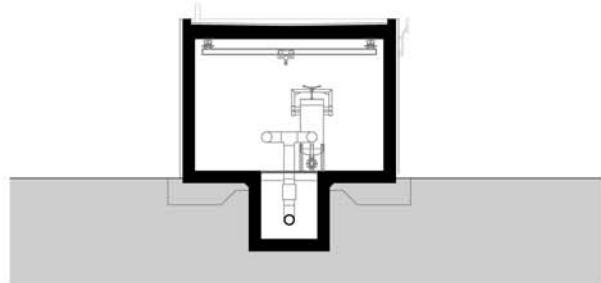
SCHNITT B-B



SCHNITT C-C



SCHNITT D-D



SCHNITT E-E

0 2 4 6 m



2008-2010
Feldkirch - Bangs

Gasübergabestation Bangs - Neubau
Architekt Helmut Kuëss