

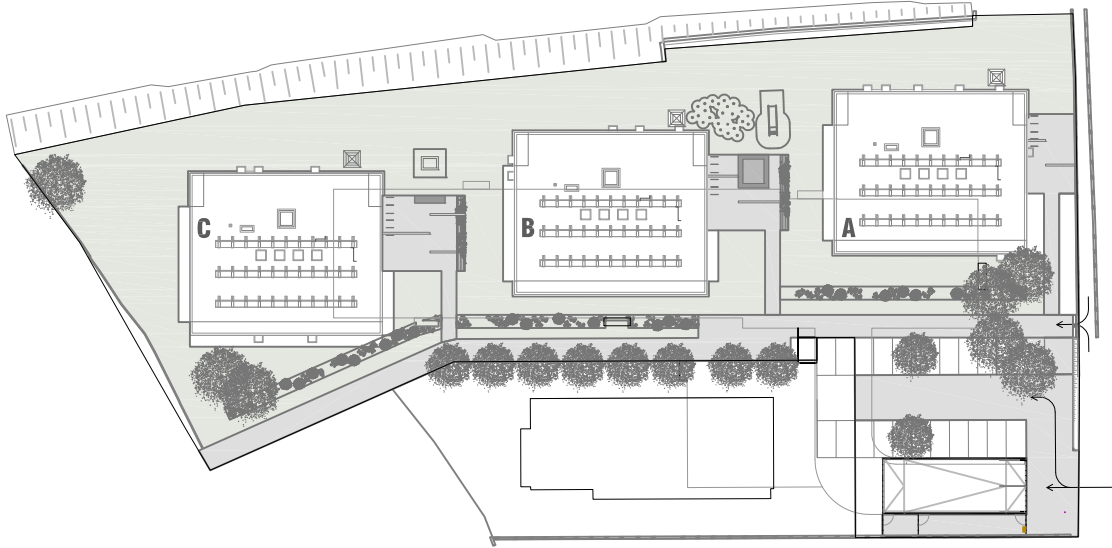


0 20 40 60 m

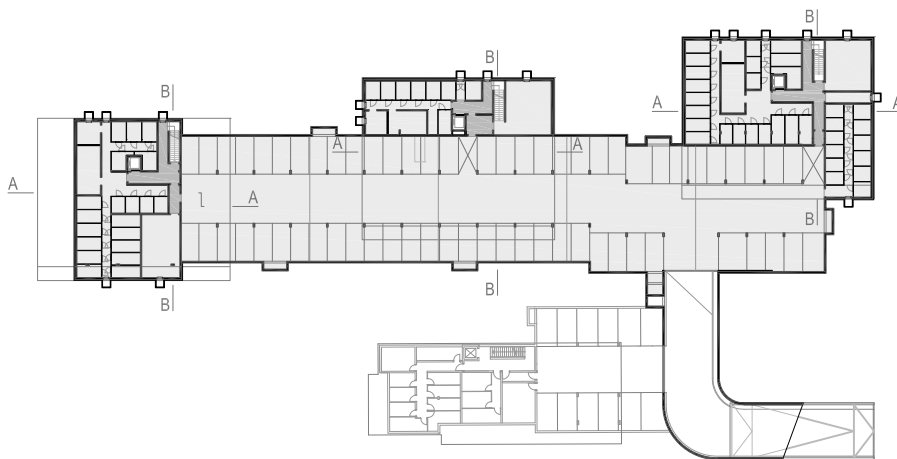
M 1:2000



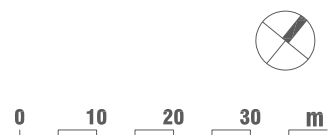
# LAGEPLAN

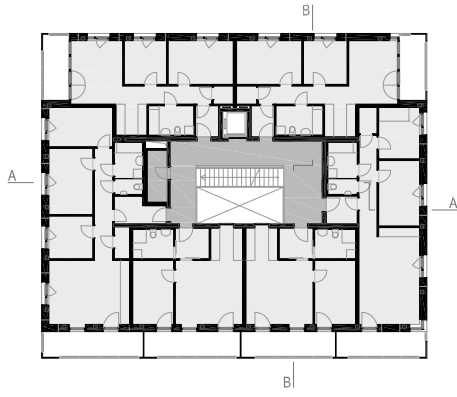


LAGEPLAN

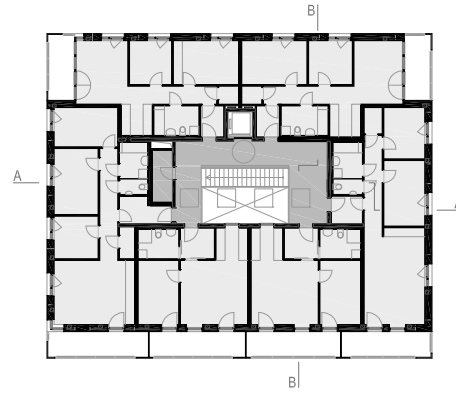


1.UG - TIEFGARAGE-ÜBERSICHT

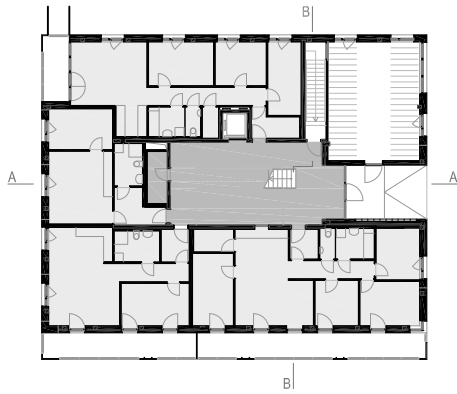




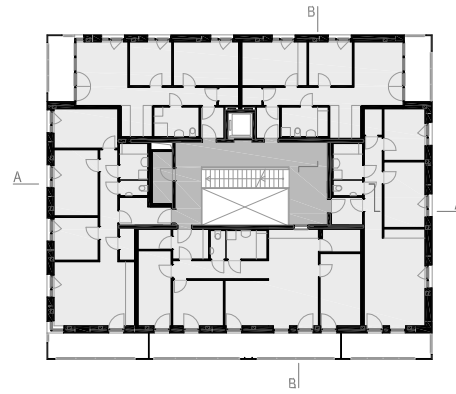
2.OG - Haus A



3.OG - Haus A

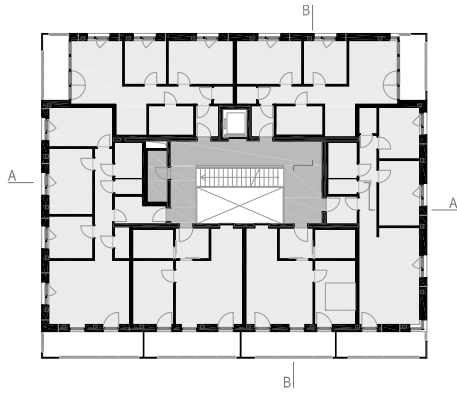


EG - Haus A

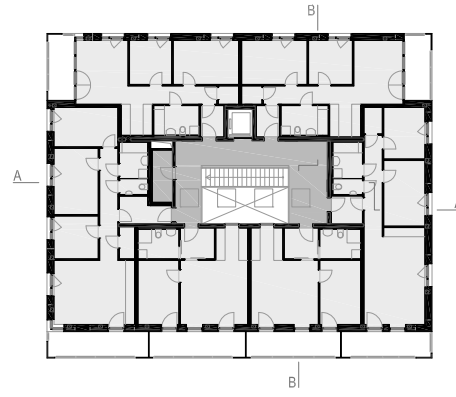


1.OG - Haus A

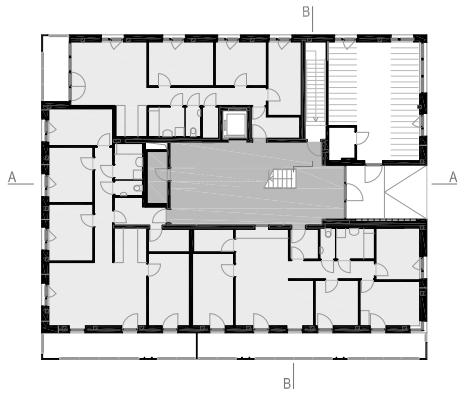




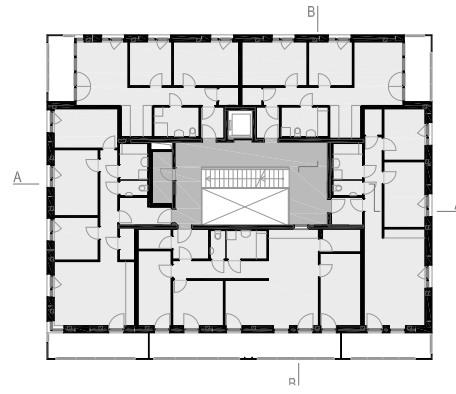
2.OG - Haus B



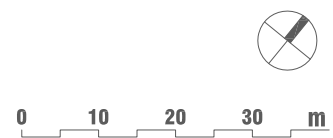
3.OG - Haus B

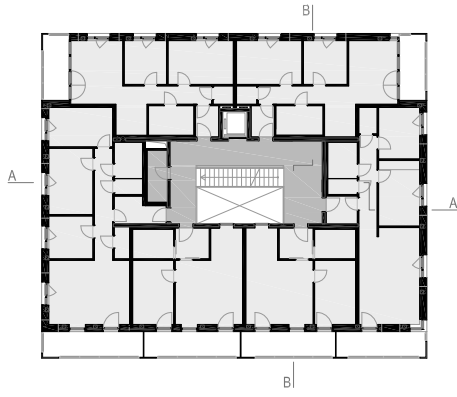


EG - Haus B

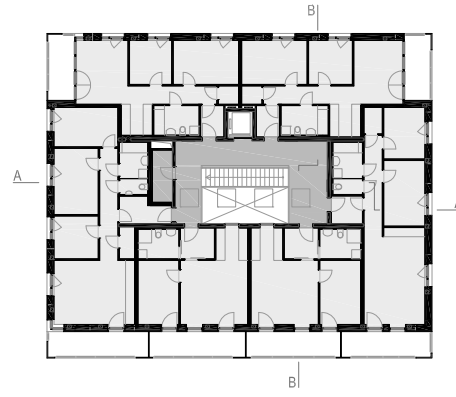


1.OG - Haus B

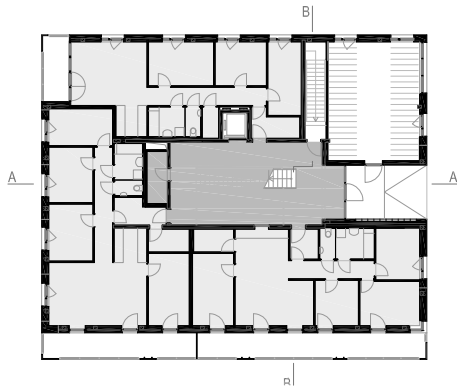




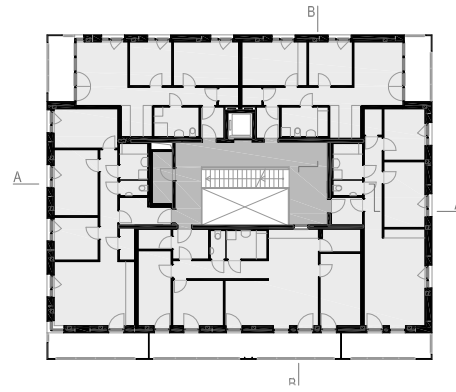
2.OG - Haus C



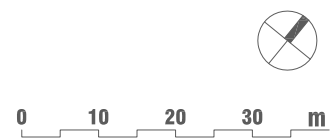
3.OG - Haus C

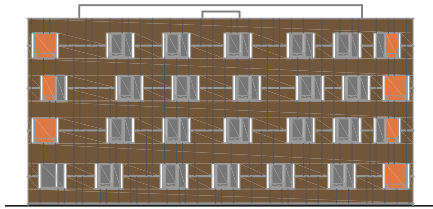


EG - Haus C

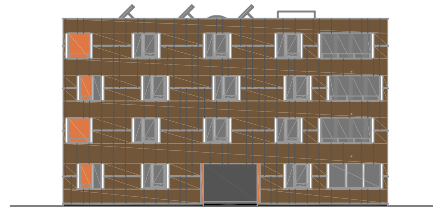


1.OG - Haus C

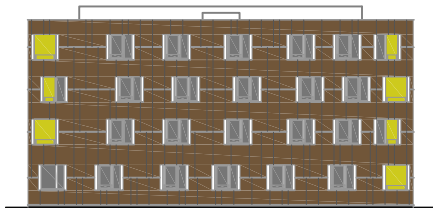




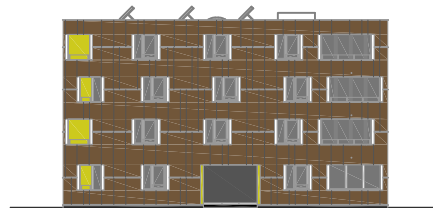
**ANSICHT NORD-WEST - Haus A**



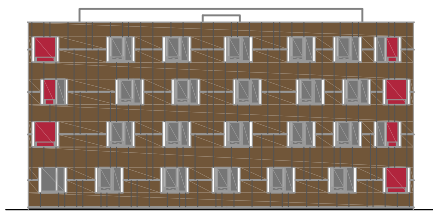
**ANSICHT NORD-OST - Haus A**



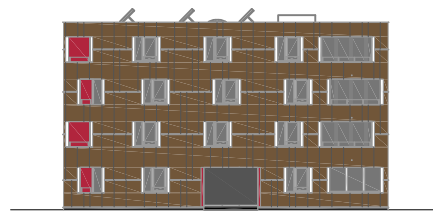
**ANSICHT NORD-WEST - Haus B**



**ANSICHT NORD-OST - Haus B**

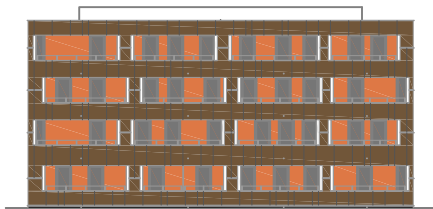


**ANSICHT NORD-WEST - Haus C**



**ANSICHT NORD-OST - Haus C**

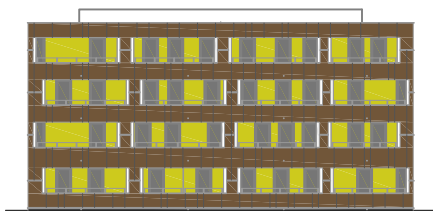
0 10 20 30 m



**ANSICHT SÜD-OST - Haus A**



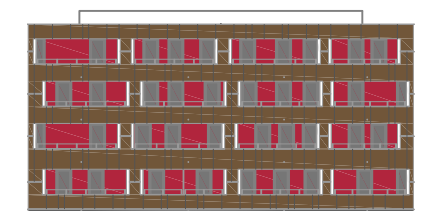
**ANSICHT SÜD-WEST - Haus A**



**ANSICHT SÜD-OST - Haus B**



**ANSICHT SÜD-WEST - Haus B**

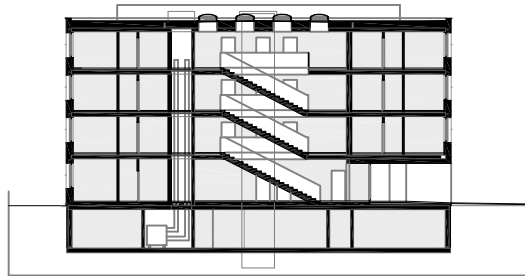


**ANSICHT SÜD-OST - Haus C**

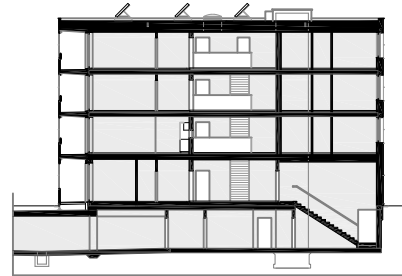


**ANSICHT SÜD-WEST - Haus C**

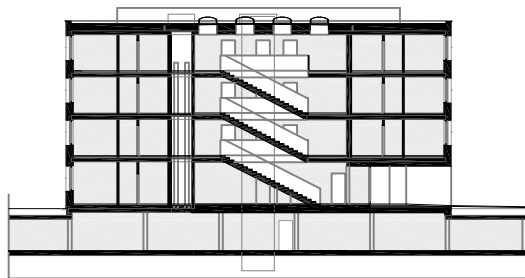
0 10 20 30 m



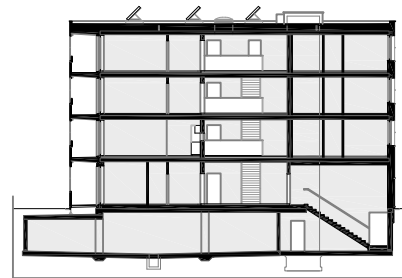
SCHNITT A-A - Haus A



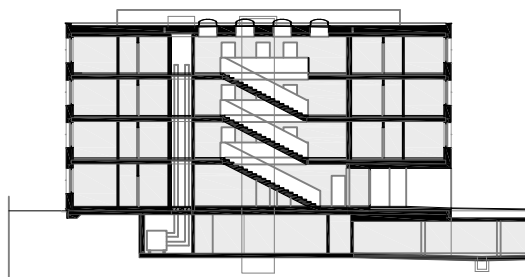
SCHNITT B-B - Haus A



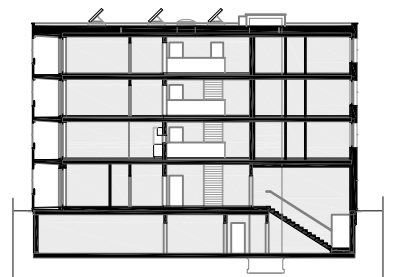
SCHNITT A-A - Haus B



SCHNITT B-B - Haus B



SCHNITT A-A - Haus C



SCHNITT B-B - Haus C

0 10 20 30 m







2008 - 2013

**Areal Feierle, Dornbirn - Alpenländische Heimstätte**  
Arge Architekten Hörburger - Kuëss